



BRIEF INFORMATION

Q110R

- Stylish appearance and compact design
- Low weight and high corrosion resistance thanks to plastic materials used
- ADR / GGVSEB certified for hazardous goods transport

PRODUCT FEATURES

Powerful reverse lamp in an elegant dark design

The new Q110R reverse lamp combines modern design with a high degree of functionality. Its dark housing gives it a sophisticated look, while the robust design has been optimised for use in demanding conditions. With a light output of 1,150 lumens at just 11 watts, the reverse lamp impresses with its high energy efficiency and excellent illumination.

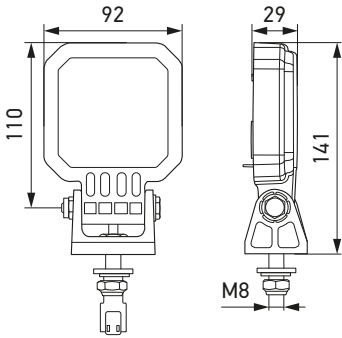
Thanks to the plastic bracket and housing, the Q110R offers high corrosion resistance, making it particularly durable and resistant. It is ADR / GGVSEB certified, which makes it ideal for use when transporting hazardous goods. In addition, the 20° inclination enables, comparatively speaking, particularly space-saving mounting.

Whether off-road or on the public highway – this reverse lamp ensures reliable lighting and a safe environment for every application.

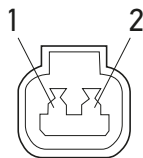
TECHNICAL DETAILS

| Technical data | |
|-------------------------|---|
| Operating voltage range | 10–32 V |
| Rated voltage | 12 V and 24 V |
| Rated voltage | 12 V: Ø 0.81 A* 24 V: Ø 0.39 A** |
| Power consumption | 11 W |
| Light output (warm) | 1,150 lm |
| Light source | LED |
| Colour temperature | 5,700 K |
| Material | Housing: heat-conductive plastic |
| Temperature range | –40 °C to +85 °C (overheating protection) |
| Protection class | IP 6K7, IP 6K9K |
| Approved | ECE-R10, ECE-R148, ADR/GGVSEB |
| Compliant | RCM |
| Protection | Polarity reversal protection, overvoltage protection |
| Mounting | Upright and pendant |

* Measured warm at 13.2 V after 30 minutes in operation.
** Measured warm at 28 V after 30 minutes in operation.

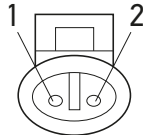
| Dimensional sketch | |
|--|--|
|  | |
| Pin allocation | |

DT connector



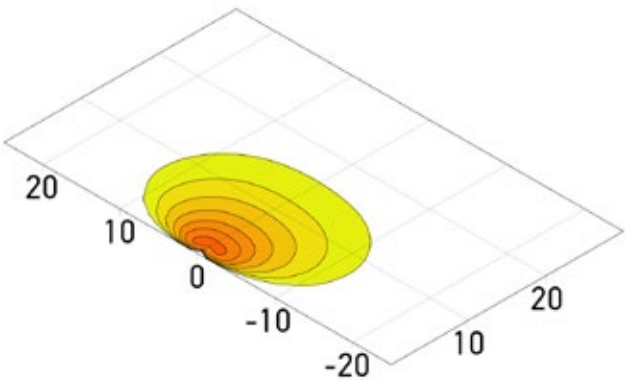
Pin 1: Power supply, white
Pin 2: Earth, black

AMP connector



Pin 1: Earth, white
Pin 2: Power supply, black


LIGHT DISTRIBUTION



Extra wide illumination

lux >= 0 1 2 4 8 16 32 64 128 192 256
Mounting position: 1.2 m high at 20° (extra wide illumination)

PROGRAM OVERVIEW

| Product image | Connection | Part number |
|---|---|-----------------|
|  | 1,000 mm cable and DEUTSCH DT connector | ZZR 996 285-501 |
| | 1,000 mm cable and AMP connector | ZZR 996 285-601 |